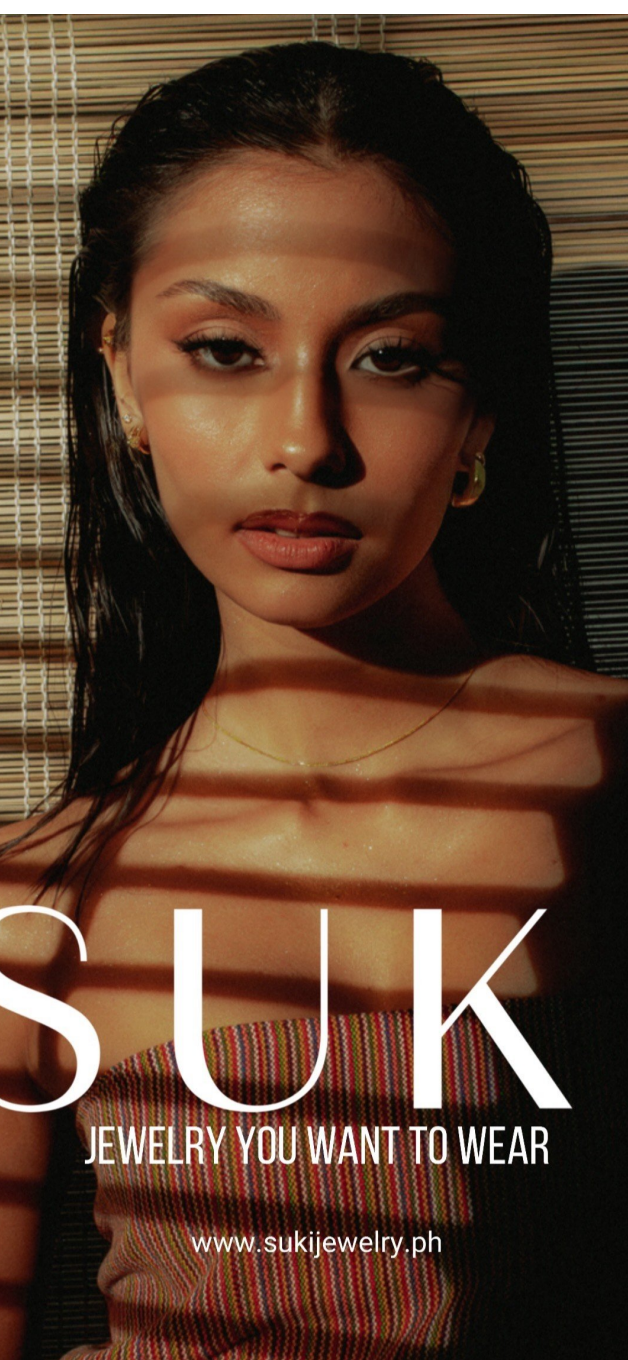


wiener
models
A KULT AGENCY



LIANE POLT



SUK

JEWELRY YOU WANT TO WEAR

www.sukjewelry.ph

LIANE POLT

HEIGHT 170 CM / 5'7" | CHEST 77 CM / 30.5" | WAIST 61 / 24 | HIPS 89 CM / 35" | HAIR DARK BROWN | EYES BROWN
DRESS 34-36 EU / 4-6 US / 6-8 UK | SHOES 38 EU / 7 US / 5 UK

@lianepolt