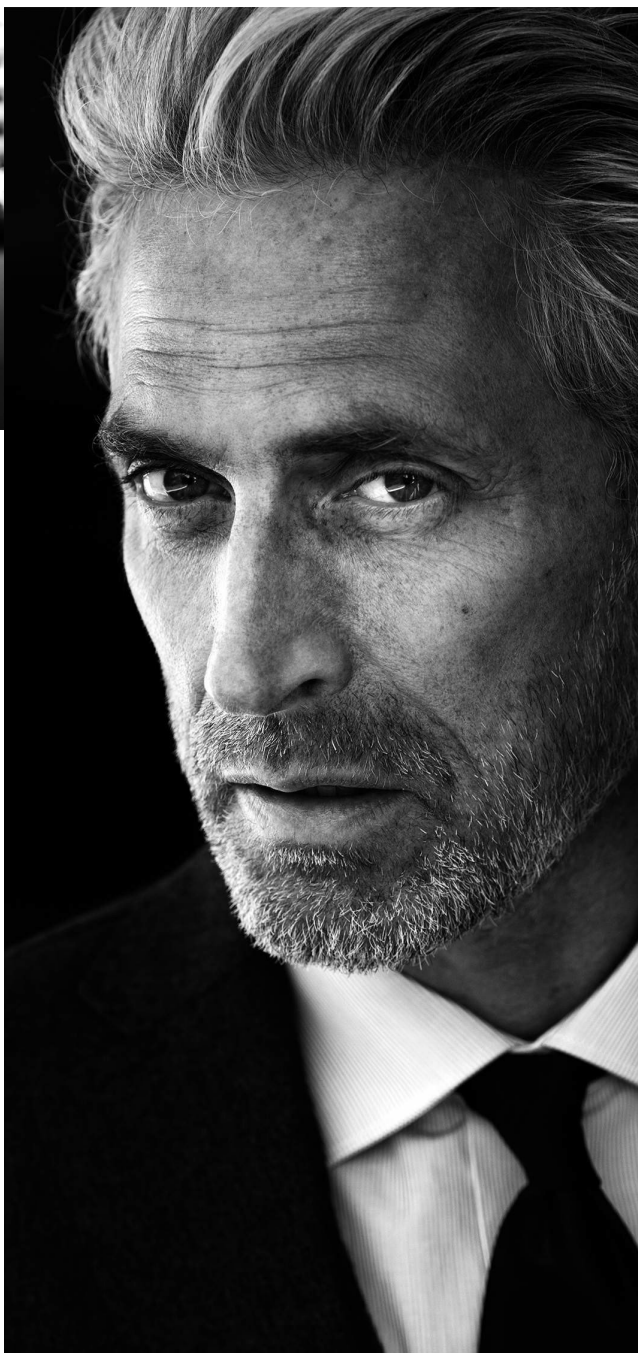


wiener  
models  
A KULT AGENCY

autumn / winter 2016



ANTON NILSSON



## ANTON NILSSON

HEIGHT 186 CM / 6'11.5" | CHEST 100 CM/39.5" | WAIST 86 / 34 | HIPS 92 CM/36" | HAIR SALT&PEPPER | EYES BLUE-GREEN  
SHOES 44 / 10 | SUIT 50 / 40 | COLLAR 40 / 16

@ swedishanton